

# QUAY QUARTER CONSTRUCTION UPDATE

18 December 2018

## QUAY QUARTER TOWER (QQT)

---

### Christmas closure

The Quay Quarter Tower project site will be closed from Saturday, **22 December 2018**, reopening Wednesday, **2 January 2019**.

## LOFTUS LANE DEVELOPMENT

---

### Christmas closure

The Loftus Lane project site will be partially closed from Saturday, **22 December 2018**, reopening Wednesday, **2 January 2019**. Light duties with minimal noise may take place on the non-public holiday days.

### Changes to construction works zone

#### Monday, 7 January 2019

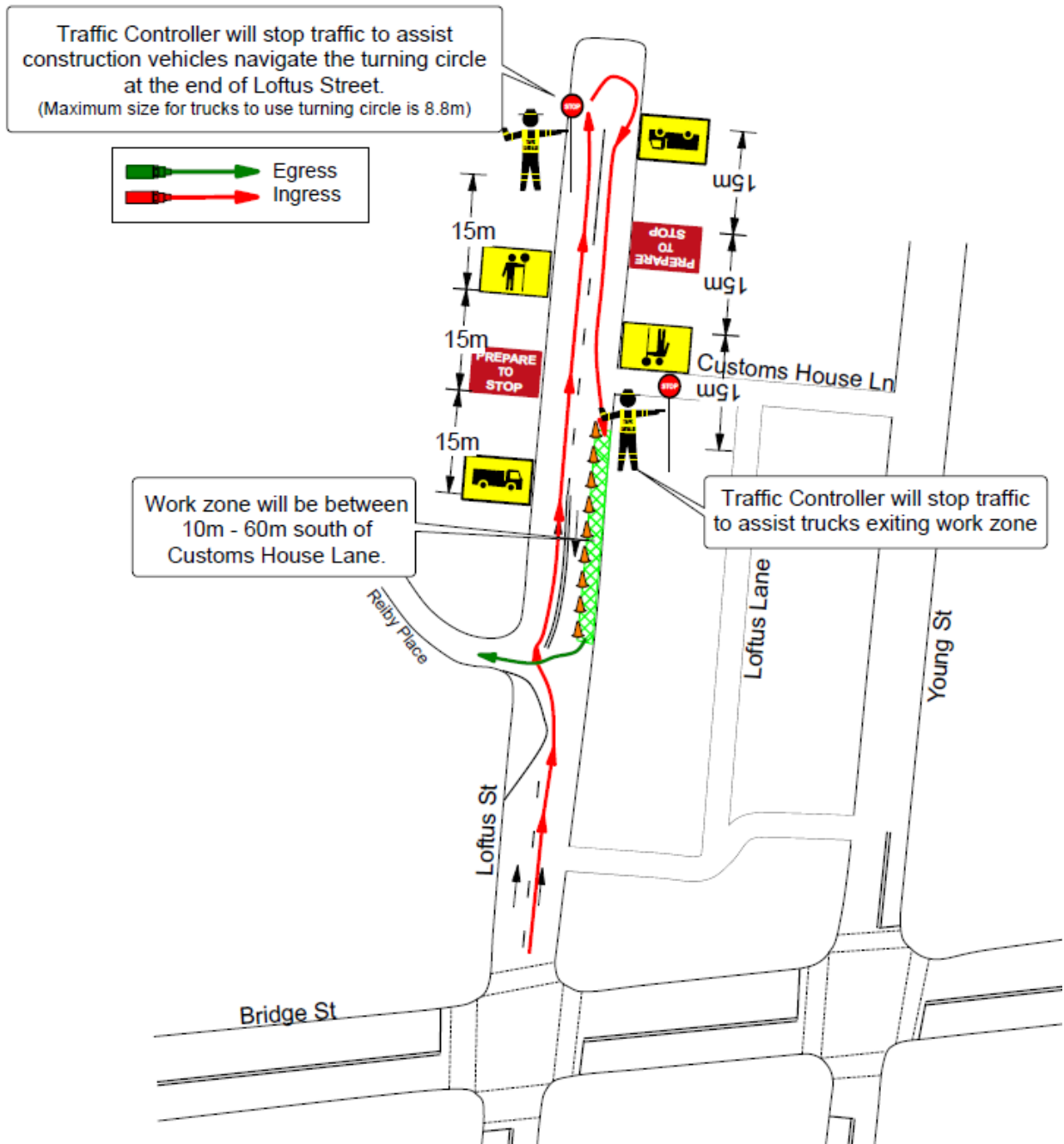
From Monday, **7 January 2019** the new work zone on Loftus Street will be established outside the Loftus Lane project site to assist with the delivery of construction material. The work zone will be operational during site working hours:

*Monday to Friday – 7am to 7pm*

*Saturday – 7am to 5pm*

The new work zone will be 50 metres long, positioned on the eastern side of Loftus Street, south of Customs House Lane (see map overleaf). Vehicle access to Customs House Lane from Loftus Street will be unaffected. The work zone will be installed by council and will be in place for 52 weeks.

Map – location of work zone (green highlight) and construction vehicles entering and exiting work zone (red and green arrows).



## PROJECT ENQUIRIES

The project dedicated hotline number is **1800 106 440** where one of our team will be available to assist you.

A dedicated email address is available for you to share any concerns or to seek information please send an email to [quayquarter@ampcapital.com](mailto:quayquarter@ampcapital.com)

